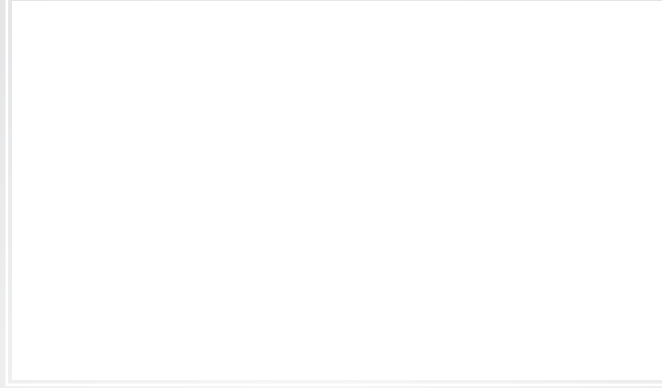


2020 EDITION

DISTRIBUTED BY



TRUCK & BUS TIRES



Headquarters - Factory

Petlas Tire Industry and Trade Kindam Mahallesi Ankara - Kayseri Caddesi No: 2/1 Kırşehir / TÜRKİYE T: +90 386 252 65 50 • F: +90 386 252 65 70

Int. Sales & Marketing

Petlas Tire Industry and Trade Ako Kule, Söğütözü Mh. 2178. Cad. No: 6 06530 Ankara / TÜRKİYE T. +90 312 309 30 30 • F: +90 312 309 22 66

Petlas Tire USA

1111 E. Lincolnway STE 205 Cheyenne, WY 82001 USA

www.starmaxx.com **MADE IN TÜRKİYE**

 **starmaxx**
TRUCK & BUS TIRES

 **starmaxx**
TRUCK & BUS TIRES

NOTICES & DISCLAIMER

- For load capacity and inflating pressure figures on different speed rates, please consult the producer company.
- Our company is entitled to change any information in this brochure without prior notice. This brochure overrides any previous documents.
- All figures are for reference and our company cannot be deemed responsible for printing errors.
- The visual content of this brochure is only representative. To find the compatible tire for your vehicle, please refer to the vehicle service or authorized tire dealer.

Starmaxx Truck and Bus Tires are characterized by quality workmanship, leading edge technology, unique tread designs and excellent performance offering perfect mix of quality and value.

Our success depends on exceeding the expectations of our customers and standing behind everything we do.

Our aim is to build long term relationships with our customers by providing excellent service, quality and delivering our promises.



CONTENTS

Page 2 Range of Starmaxx Tires

Page 4 Starmaxx Tires by Size

Long Haul
Regional
Trailer
Mixed Service (On-Off)
Trailer (On-Off)
Off Road
Urban

Page 6 General Information

Sidewall Markings
Speed Index Table
Load Index Table

Long Haul

GH100	GH105	GH110	DH100
12	13	14	15

Regional

GZ300	DZ300
16	17

Trailer

LH100	GH100	GH110	LZ300	LZ305
18	19	20	21	22

Mixed Service (On - Off)

GC700	GC710	GY800	DC700 PLUS
23	24	25	26

Trailer (On - Off)

LCW710
27

Off Road

DM905
28

Urban

GU500	GUW550	DUW550
30	31	32

Long Haul



GH100



GH105



GH110



DH100

Regional



GZ300



DZ300

Trailer



LH100



GH100



GH110



LZ300



LZ305

Mixed Service (On - Off)



GC700



GC710



GY800



DC700 PLUS

Trailer (On - Off)



LCW710

Off Road



DM905

Urban



GU500



GUW550



DUW550



GH 100 LONG HAUL
245/70R 19.5 136/134 M
265/70R 19.5 140/138 M
285/70R 19.5 146/144 L (145/143 M)
295/80R 22.5 152/148 M
315/80R 22.5 154/150 M (156/150 L)
TRAILER SIZES
245/70R 19.5 FRT 141/140 J
265/70R 19.5 FRT 143/141 J
285/70R 19.5 FRT 150/148 J



GH105 LONG HAUL
11R 22.5 148/145 M
12R 22.5 152/148 M



GH 110 LONG HAUL ECOPLANET
285/70R 19.5 146/144 L (145/143 M)
295/80R 22.5 152/148 M
315/70R 22.5 156/150 L (154/150 M)
315/80R 22.5 154/150 M (156/150 L)
315/60R 22.5 152/148 L
TRAILER SIZES
285/70R 19.5 FRT 150/148 J
UNDER DEVELOPMENT
295/60R 22.5 150/147 L



DH100 LONG HAUL
265/70R 19.5 140/138 M
285/70R 19.5 146/144 L (140/137 M)
11R 22.5 148/145 M
12R 22.5 152/148 M
295/80R 22.5 PLUS 152/148 M
315/70R 22.5 154/150 L (152/148 M)
315/80R 22.5 154/150 M (156/150 L)
315/60R 22.5 152/148 L
UNDER DEVELOPMENT
295/60R 22.5 150/147 L



GZ300 REGIONAL
8.5R 17.5 121/120 L
215/75R 17.5 126/124 M
225/75R 17.5 129/127 M
235/75R 17.5 132/130 M



DZ300 REGIONAL
8.5R 17.5 121/120 L
215/75R 17.5 126/124 M
225/75R 17.5 129/127 M
235/75R 17.5 132/130 M
245/70R 19.5 136/134 M



LH100 TRAILER PROGREEN
215/75R 17.5 135/133 J
235/75R 17.5 143/141 J (144/144 F)
245/70R 17.5 143/141 J (146/146 F)
245/70R 19.5 141/140 J
265/70R 19.5 143/141 J
285/70R 19.5 150/148 J



LZ300 TRAILER
435/50R 19.5 160 J
385/55R 22.5 160 K (158 L)
385/65R 22.5 160 K (158 L)
UNDER DEVELOPMENT
385/65R 22.5 164K



LZ305 TRAILER
215/75R 17.5 135/133 J
235/75R 17.5 143/141 J (144/144 F)
385/65R 22.5 160 K (158 L)



GC700 MIXED SERVICE (ON-OFF)
12R 22.5 152/148 L
315/80R 22.5 156/150 K (154/150 L)
13R 22.5 156/150 K



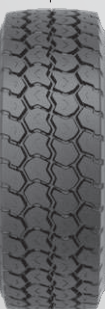
GC710 MIXED SERVICE (ON-OFF)
315/80R 22.5 156/150 L
12.00R 24 160/157 K



GY800 MIXED SERVICE (ON-OFF)
295/80R 22.5 152/148 L
315/80R 22.5 156/150 K
13R 22.5 156/150 K
12.00R 24 160/157 K



DC700 MIXED SERVICE (ON-OFF) PLUS
12R 22.5 152/148 L
295/80R 22.5 152/148 M
315/80R 22.5 156/160 K (154/150 L)



LCW710 TRAILER (ON-OFF)
385/65R 22.5 160 K (158 L)



DM905 OFF ROAD
13R 22.5 154/150 K



GU500 URBAN
275/70R 22.5 150/145 J (152/148 E)
275/70R 22.5 150/148 J



GUW550 URBAN
275/70R 22.5 150/145 J (152/148 E)



DUW550 URBAN
275/70R 22.5 150/145 J (152/148 E)

There are certain markings on the sidewalls of each tire. Below, you can find remarks and notices about the sidewall markings and the properties they depict:

DOT Symbol:

Proves that tyre complies with DOT regulations.

European Commission of Economics Confirmation :

It is the legitimate proof that tires comply with all ECE directives and is represented by a common and unique confirmation number due to regulation.

Max. Load and Pressure Markings:

It is a necessary marking on sidewalls of tires which complies with DOT directives It consists of necessary information about max.load and pressure of tyres.

"European Commission of Economics" Tire Verification Symbol:

This symbol proves that the tyre complies with all necessary standards disclaimed by European Commission of Economics.

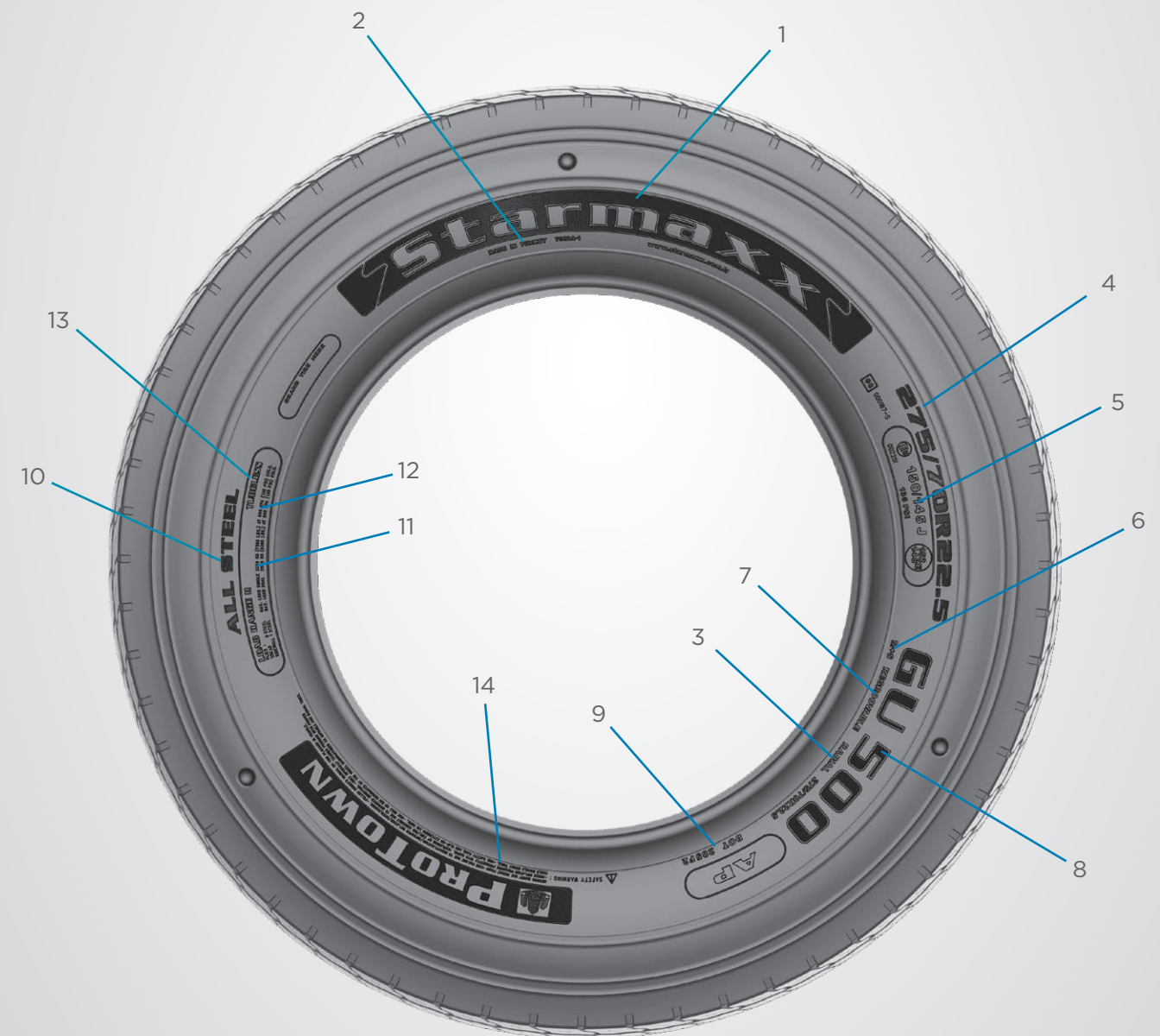
Construction Info:

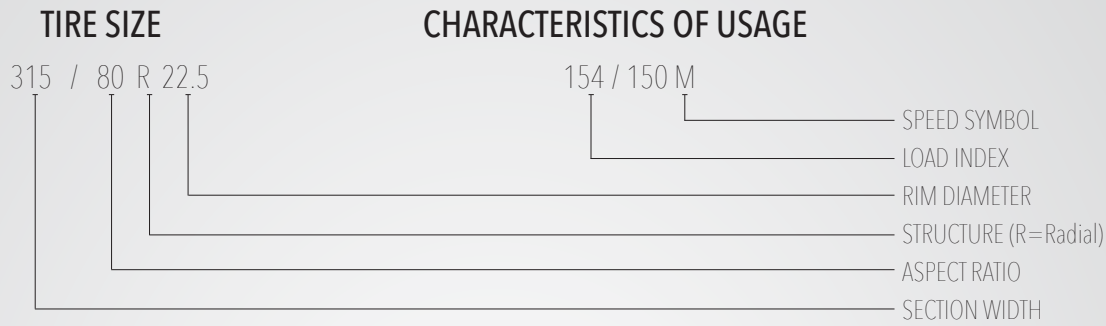
It represents type of material used in sidewall and base in accordance with DOT regulation.

Speed class and load index :

European ETRTO standards set the maximum load limits of a tire.

- | | |
|-----------------------------------|---|
| 1. Brand Name | 8. Pattern Name |
| 2. Manufacturing Country | 9. Date of Manufacture |
| 3. Construction Type: Radial/Bias | 10. All Steel |
| 4. Tire Size | 11. Maximum Load Capacity |
| 5. Load / Speed Index | 12. Inflating Pressure |
| 6. M+S / 3PMSF Marking | 13. Construction Type: Tubeless/Tube Type |
| 7. Retreadability Information | 14. Safety Warnings |





Speed Symbol Table

It is the alphabetical code of the velocity which the tire can perform.

Speed Symbol	Speed Limit (km/h)	Speed Symbol	Speed Limit (km/h)	Speed Symbol	Speed Limit (km/h)
A1	5	D	65	Q	160
A2	10	E	70	R	170
A3	15	F	80	S	180
A4	20	G	90	T	190
A5	25	J	100	U	200
A6	30	K	110	H	210
A7	35	L	120	V	240
A8	40	M	130	W	270
B	50	N	140	Y	300
C	60	P	150	ZR	270 km+

Load Index Table

The load index is a symbol which shows the maximum load capacity of the vehicle per tire.

A	B	A	B	A	B	A	B	A	B	A	B
60	250	96	710	132	2000	168	5600	204	16000	240	45000
61	257	97	730	133	2060	169	5800	205	16500	241	46250
62	265	98	750	134	2120	170	6000	206	17000	242	47500
63	272	99	775	135	2180	171	6150	207	17500	243	48750
64	280	100	800	136	2240	172	6300	208	18000	244	50000
65	290	101	825	137	2300	173	6500	209	18500	245	51500
66	300	102	850	138	2360	174	6700	210	19000	246	53000
67	307	103	875	139	2430	175	6900	211	19500	247	54500
68	315	104	900	140	2500	176	7100	212	20000	248	56000
69	325	105	925	141	2575	177	7300	213	20600	249	58000
70	335	106	950	142	2650	178	7500	214	21200	250	60000
71	345	107	975	143	2725	179	7750	215	21800	251	61500
72	355	108	1000	144	2800	180	8000	216	22400	252	63000
73	365	109	1030	145	2900	181	8250	217	23000	253	65000
74	375	110	1060	146	3000	182	8500	218	23600	254	67000
75	387	111	1090	147	3075	183	8750	219	24300	255	69000
76	400	112	1120	148	3150	184	9000	220	25000	256	71000
77	412	113	1150	149	3250	185	9250	221	25750	257	73000
78	425	114	1180	150	3350	186	9500	222	26500	258	75000
79	437	115	1215	151	3450	187	9750	223	27250	259	77500
80	450	116	1250	152	3550	188	10000	224	28000	260	80000
81	462	117	1285	153	3650	189	10300	225	29000	261	82500
82	475	118	1320	154	3750	190	10600	226	30000	262	85000
83	487	119	1360	155	3875	191	10900	227	30750	263	87500
84	500	120	1400	156	4000	192	11200	228	31500	264	90000
85	515	121	1450	157	4125	193	11500	229	32500	265	92500
86	530	122	1500	158	4250	194	11800	230	33500	266	95000
87	545	123	1550	159	4375	195	12150	231	34500	267	97500
88	560	124	1600	160	4500	196	12500	232	35500	268	100000
89	580	125	1650	161	4625	197	12850	233	36500	269	103000
90	600	126	1700	162	4750	198	13200	234	37500	270	106000
91	615	127	1750	163	4875	199	13600	235	38750	271	109000
92	630	128	1800	164	5000	200	14000	236	40000	272	112000
93	650	129	1850	165	5150	201	14500	237	41250	273	115000
94	670	130	1900	166	5300	202	15000	238	42500	274	118000
95	690	131	1950	167	5450	203	15500	239	43750	275	121500

- (A) Load Index
- (B) The weight a tyre can carry (kg)

**DRIVE
YOUR
BUSINESS
FURTHER**



GH100

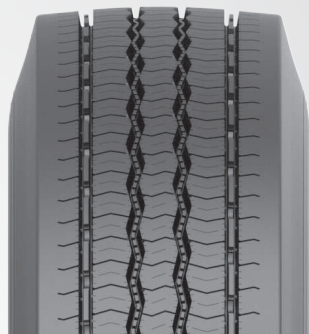
starmaxx.com

starmaxx
TRUCK-BUS TIRES



GH100

GH100 pattern is suitable to use on all axles on buses and at steer or non-powered second axle on trucks. Tread pattern geometry is optimized to deliver steering and grip on wet roads. Exceptional carcass structure provides an outstanding braking performance.

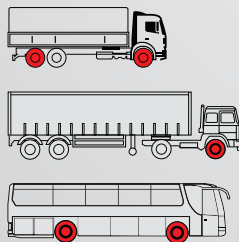


TIRE SIZE	LOAD / SPEED INDEX	LOAD CAPACITY		SPEED LIMIT	RIM		INFLATED DIMENSIONS		INFLATED PRESSURE		EU TIRE LABEL			
		SINGLE	DUAL		PERMITTED	RECOM.	SECTION WIDTH	OUTER DIAMETER	psi	Kpa			DB	
245/70R 19.5	136/134 M	4880	8480	130	6.75	7.50	247.5	843.2	123	850	D	B	69	1
265/70R 19.5	140/138 M	5000	9440	130	6.75	7.50	263.6	865.8	112	775	D	B	69	1
285/70R 19.5	146/144 L (145/143 M)	6000 (5800)	11200 (10900)	120 (130)	7.50, 9.00	8.25	286	897	130	900	D	B	69	1
295/80R 22.5	152/148 M	7100	12600	130	8.25	9.00	303	1056	123	850	D	A	69	1
315/80R 22.5	154/150 M (156/150 L)	7500 (8000)	13400 (13400)	130 (120)	9.75	9.00	311	1085	120	825	D	A	69	1

PATTERN PROPERTIES

- Computer designed tire profile and block arrays offer safe and balanced driving.
- Excellent carcass structure is suitable for retreading several times.
- Optimised tread design provides resistance against irregular wear by balancing the pressure equally under load.
- Offers excellent grip and short braking distance with numerous sipes and z-shaped circumferential blocks.
- Special tread compound and robust structure ensure longevity and economic fuel consumption.
- Circumferential grooves discharge water quickly and efficiently.

POSITION / APPLICATION



GH105

GH105 is a steering pattern that is designed for trucks. It provides comfort and maneuverability for a balanced drive on asphalt roads. Wide tread area and multi dimensional sipes improve mileage and enhance traction. Offers outstanding grip on both wet and dry roads.

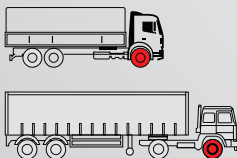


TIRE SIZE	LOAD / SPEED INDEX	LOAD CAPACITY		SPEED LIMIT	RIM		INFLATED DIMENSIONS		INFLATED PRESSURE		EU TIRE LABEL			
		SINGLE	DUAL		PERMITTED	RECOM.	SECTION WIDTH	OUTER DIAMETER	psi	Kpa			DB	
11R 22.5	148/145 M	6300	11600	130	7.50	8.25	278.5	1049	123	850	D	B	69	1
12R 22.5	152/148 M	7100	12600	130	8.25	9.00	300	1085	123	850	D	A	69	1

PATTERN PROPERTIES

- Wide shoulder blocks provide lateral balance for a smooth drive.
- Optimized tread design provides resistance against irregular wear by balancing the pressure equally under load.
- Special tread compound and robust structure ensure longevity and economic fuel consumption.
- Circumferential grooves drain water quickly and efficiently.
- Medium density sipes provide superior handling and decrease braking distance.
- Indented sides of the blocks provide safe brake distance even if the tire is worn.
- Excellent carcass structure is suitable for retreading several times.

POSITION / APPLICATION





GH 110 ECOPLANET

GH110 Ecoplanet is suitable to use on all axles on buses and at steer or non-powered second axle on trucks. Special tread pattern design ensures even wear throughout the tyre's lifespan. Multiple grooves allow fast water discharge and provide exceptional wet handling on asphalt roads. Wide tread area and multi dimensional sipes improve mileage and enhance traction. Offers outstanding grip on both wet and dry roads.



TIRE SIZE	LOAD / SPEED INDEX	LOAD CAPACITY		SPEED LIMIT	RIM		INFLATED DIMENSIONS		INFLATED PRESSURE		EU TIRE LABEL			
		SINGLE	DUAL		PERMITTED	RECOM.	SECTION WIDTH	OUTER DIAMETER	psi	Kpa			DB	
285/70R 19.5	146/144 L (145/143 M)	6000 (5800)	11200 (10900)	120 (130)	7.50, 9.00	8.25	283	894	130	900	D	B	69	1
295/80R 22.5	152/148 M	7100	12600	130	8.25	9.00	301	1055	123	850	C	A	70	1
315/70R 22.5	156/150 L (154/150 M)	8000 (7500)	13400 (13400)	120 (130)	9.75	9.00	315	1010	130	900	C	A	70	1
315/80R 22.5	154/150 M (156/150 L)	7500 (8000)	13400 (13400)	130 (120)	9.75	9.00	312	1080	120	825	C	A	70	1
315/60R 22.5	152/148 L	-	-	-	-	-	-	-	-	-	-	-	-	-

UNDER DEVELOPMENT SIZES
295/60R 22.5 150/147 L

PATTERN PROPERTIES



Optimized tread pattern improves resistance against irregular abrasion by distributing pressure equally under load.



Numerous sipes on the ribs enable exceptional grip.



Circumferential grooves provide quick and efficient water discharge.



Computer designed tire pattern and five circumferential ribs ensure a balanced and comfortable drive.

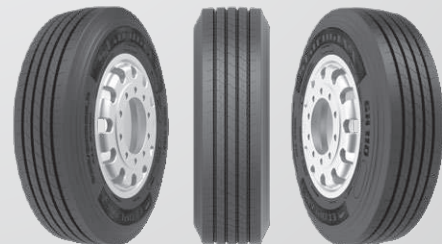
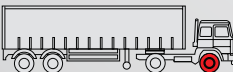
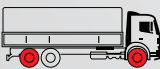


Special tread compound and robust structure enhance efficiency of fuel consumption and improves longevity.



Exceptional carcass structure is suitable for retreading.

POSITION / APPLICATION



DH100

DH100 is a drive axle pattern designed for busses and trucks. Provides exceptional traction on asphalt roads. Block array decreases wear and increases wet grip. Optimized tread profile provides resistance against irregular wear under heavy loads. Delivers a safe drive and extended mileage in demanding weather conditions. Suitable for retreading.



TIRE SIZE	LOAD / SPEED INDEX	LOAD CAPACITY		SPEED LIMIT	RIM		INFLATED DIMENSIONS		INFLATED PRESSURE		EU TIRE LABEL			
		SINGLE	DUAL		PERMITTED	RECOM.	SECTION WIDTH	OUTER DIAMETER	psi	Kpa			DB	
265/70R 19.5	140/138 M	5000	9440	130	6.75	7.50	266	866	112	775	D	C	74	2
285/70R 19.5	146/144 L (140/137 M)	6000 (5000)	11200 (9200)	120 (130)	7.50, 9.00	8.25	287	897.5	130	900	E	C	74	2
11R 22.5	148/145 M	6300	11600	130	7.50	8.25	278.5	1058	123	850	E	C	74	2
12R 22.5	152/148 M	7100	12600	130	8.25	9.00	300	1096	123	850	D	B	74	2
295/80R 22.5 PLUS	152/148 M	7100	12600	130	8.25	9.00	305	1060	123	850	D	B	74	2
315/70R 22.5	154/150 L (152/148 M)	7500 (7100)	13400 (12600)	120 (130)	9.75	9.00	315	1021.5	130	900	E	B	75	2
315/80R 22.5	154/150 M (156/150 L)	7500 (8000)	13400 (13400)	130 (120)	9.75	9.00	312	1096	120	825	D	B	75	2
315/60R 22.5	152/148L	-	-	-	-	-	-	-	-	-	-	-	-	-

UNDER DEVELOPMENT SIZES
295/60R 22.5 150/147L

PATTERN PROPERTIES



Optimized tread design provides resistance against irregular wear by distributing the pressure equally under load.



Reinforced interconnected blocks and carefully arranged block array improve driving balance.



Circumferential and lateral grooves drain water quickly and efficiently.



Block array structure provides high traction by generating numerous road adherence points on asphalt in any kind of weather conditions.



Special tread compound and robust structure ensure longevity and enhance fuel efficiency.

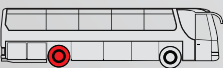
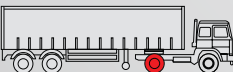
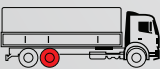


Excellent carcass structure is suitable for retreading.



Optimized tread depth increases the tire's lifespan.

POSITION / APPLICATION



GZ300



GZ300 pattern is designed for light commercial vehicles and suitable to use on all axles. Strong carcass structure provides high retreadability feature. Delivers balanced drive, perfect comfort and high maneuverability on asphalt roads. Provides exceptional wet grip. The unique pattern design enhances mileage performance.



TIRE SIZE	LOAD / SPEED INDEX	LOAD CAPACITY		SPEED LIMIT	RIM		INFLATED DIMENSIONS		INFLATED PRESSURE		EU TIRE LABEL			
		SINGLE	DUAL		PERMITTED	RECOM.	SECTION WIDTH	OUTER DIAMETER	psi	Kpa			DB	
8.5R 17.5	121/120 L	2900	5600	120	5.25, 6.75	6.00	214	804,5	91	625	D	B	70	1
215/75R 17.5	126/124 M	3400	6400	130	6.75	6.00	216	778	102	700	D	A	71	2
225/75R 17.5	129/127 M	3700	7000	130	6.00	6.75	223	790	105	725	D	A	71	2
235/75R 17.5	132/130 M	4000	7600	130	7.50	6.75	237	803	110	760	D	A	71	2

PATTERN PROPERTIES



Unique pattern design and optimized block array provides excellent steering performance.



Horizontal sipes between circumferential blocks increase traction, decrease braking distance and provide outstanding grip on wet roads.



Z-shaped block structure provides excellent traction and secure braking performance.



Stone ejectors inside the grooves prevent pebble penetration inside grooves, protecting the tread and carcass.



Circumferential grooves drain water quickly and efficiently.



Provides long life and resistance to irregular wear thanks to its special belt construction, optimized footprint and rigid shoulders.



All steel construction and specifically designed low profile structure meet all highway usage criteria and offer superior comfort.

POSITION / APPLICATION



DZ300



DZ300 is drive axle (traction) pattern designed for light commercial trucks and busses. Having 3PMSF and M+S, DZ300 provides exceptional grip and braking on snowy roads. Delivers high mileage thanks to its special compound.



TIRE SIZE	LOAD / SPEED INDEX	LOAD CAPACITY		SPEED LIMIT	RIM		INFLATED DIMENSIONS		INFLATED PRESSURE		EU TIRE LABEL			
		SINGLE	DUAL		PERMITTED	RECOM.	SECTION WIDTH	OUTER DIAMETER	psi	Kpa			DB	
8.5R 17.5	121/120 L	2900	5600	120	5.25, 6.75	6.00	214	804,5	91	625	E	B	74	2
215/75R 17.5	126/124 M	3400	6400	130	6.75	6.00	216	775	102	700	E	B	74	2
225/75R 17.5	129/127 M	3700	7000	130	6.00	6.75	230	791	105	725	E	B	74	2
235/75R 17.5	132/130 M	4000	7600	130	7.50	6.75	237	803	110	760	E	B	74	2
245/70R 19.5	136/134 M	4880	8480	130	6.75	7.50	248	842,6	123	850	E	B	74	2

PATTERN PROPERTIES



The sipes between the blocks offer enhanced traction, shortened brake distance and excellent wet grip.



Circumferential and lateral grooves ensure quick and effective water discharge.



All steel construction and specifically designed low profile structure meet all highway usage criteria.



Interconnected blocks improves longevity.



Special belt construction and optimized footprint offer long life and provide resistance against irregular wear.



Provides long life and resistance to irregular wear thanks to its special construction and rigid shoulders.



Optimized tread depth increases the tire's durability and lifespan.

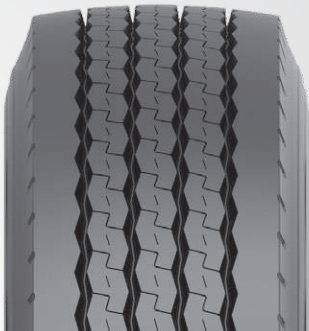
POSITION / APPLICATION



LH100 ECOPLANET



LH100 EcoPlanet is a free rolling trailer tire specifically designed for fuel efficiency. It provides exceptional wet grip performance. Its strong carcass structure ensures longevity and reduces irregular wear.



TIRE SIZE	LOAD / SPEED INDEX	LOAD CAPACITY		SPEED LIMIT	RIM		INFLATED DIMENSIONS		INFLATED PRESSURE		EU TIRE LABEL			
		SINGLE	DUAL		PERMITTED	RECOM.	SECTION WIDTH	OUTER DIAMETER	psi	Kpa			DB	
215/75R 17.5	135/133 J	4360	8240	100	6.75	6	212	772	123	850	C	A	69	1
235/75R 17.5	143/141 J (144/144 F)	5450 (5600)	10300 (11200)	100 (80)	7.50	6.75	237	803	127	875	D	A	69	1
245/70R 17.5	143/141 J (146/146 F)	5450 (6000)	10300 (12000)	100 (80)	6.75	7.50	243	795.1	125	860	D	B	69	1
245/70R 19.5	141/140 J	5150	10000	100	6.75	7.50	245.5	844.5	125	860	D	B	69	1
265/70R 19.5	143/141 J	5450	10300	100	6.75	7.50	267.3	865	123	850	D	B	69	1
285/70R 19.5	150/148 J	6700	12600	100	7.50, 9.00	8.25	282.5	892.5	130	900	D	B	73	2

PATTERN PROPERTIES



Five circumferential blocks provide excellent cornering stability.



Optimized pattern design and specially developed tread compound decreases fuel consumption.



Z-shaped block structure provides excellent handling on wet surface.

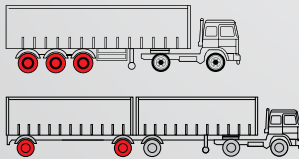


Special angled circumferential grooves minimize pebble penetration while allowing quick and efficient water drainage.



Excellent carcass structure is suitable for retreading several times.

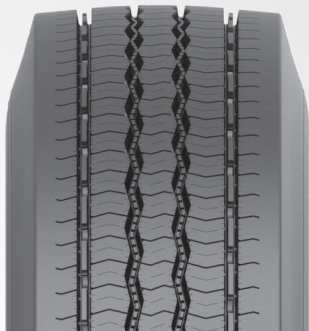
POSITION / APPLICATION



GH 100



GH100 is a free rolling trailer tire. Tread pattern geometry is optimized to deliver steering and grip on wet roads. Exceptional carcass structure provides outstanding braking performance.



TIRE SIZE	LOAD / SPEED INDEX	LOAD CAPACITY		SPEED LIMIT	RIM		INFLATED DIMENSIONS		INFLATED PRESSURE		EU TIRE LABEL			
		SINGLE	DUAL		PERMITTED	RECOM.	SECTION WIDTH	OUTER DIAMETER	psi	Kpa			DB	
245/70R 19.5 FRT	141/140 J	5150	10000	100	6.75	7.50	247.5	843.2	125	860	D	B	69	1
265/70R 19.5 FRT	143/141 J	5450	10300	100	6.75	7.50	263.6	865.8	112	775	D	B	69	1
285/70R 19.5 FRT	150/148 J	6700	12600	100	7.50, 9.00	8.25	286	897	130	900	D	B	69	1

FRT: Due to the high load capacity, can be used on Free Rolling Trailer axles.

PATTERN PROPERTIES



Computer designed tire profile and block arrays offer safe and balanced driving.



Optimised tread design provides resistance against irregular wear by balancing the pressure equally under load.



Special tread compound and robust structure ensure longevity and economic fuel consumption.



Excellent carcass structure is suitable for retreading several times.

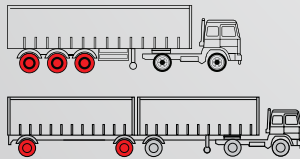


Offers excellent grip and short braking distance with numerous sipes and z-shaped circumferential blocks.



Circumferential grooves discharge water quickly and efficiently.

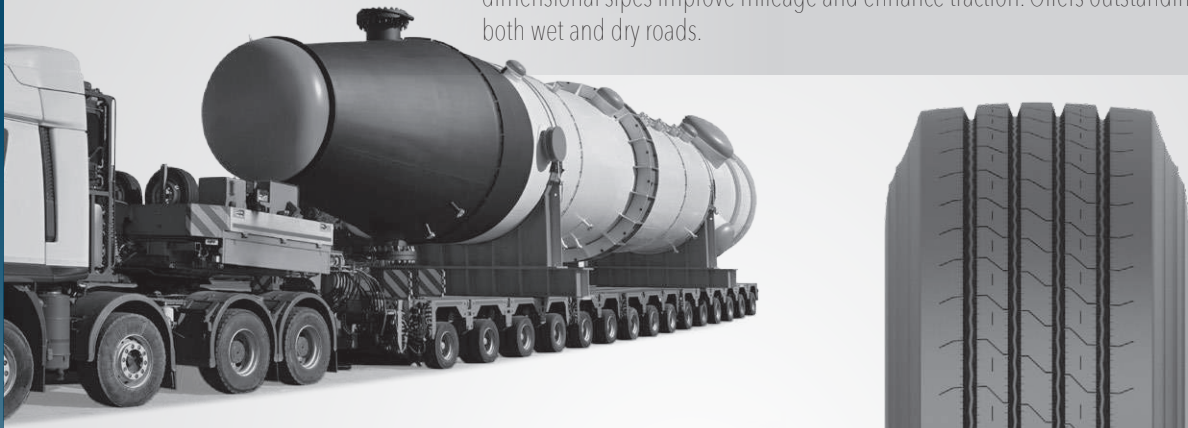
POSITION / APPLICATION



GH 110 ECOPLANET



GH110 Ecoplanet is a free rolling trailer tire. Special tread pattern design ensures even wear throughout the tyre's lifespan. Multiple grooves allow fast water discharge and provide exceptional wet handling on asphalt roads. Wide tread area and multi dimensional sipes improve mileage and enhance traction. Offers outstanding grip on both wet and dry roads.



TIRE SIZE	LOAD / SPEED INDEX	LOAD CAPACITY		SPEED LIMIT	RIM		INFLATED DIMENSIONS		INFLATED PRESSURE		EU TIRE LABEL			
		SINGLE	DUAL		PERMITTED	RECOM.	SECTION WIDTH	OUTER DIAMETER	psi	Kpa			DB	
285/70R 19.5 FRT	150/148 J	6700	12600	100	7.50, 9.00	8.25	283	894	130	900	D	B	69	1

FRT: Due to the high load capacity, can be used on Free Rolling Trailer axles.

PATTERN PROPERTIES



Optimized tread pattern improves resistance against irregular abrasion by distributing pressure equally under load.



Numerous sipes on the ribs enable exceptional grip.



Circumferential grooves provide quick and efficient water discharge.



Computer designed tire pattern and five circumferential ribs ensure a balanced and comfortable drive.

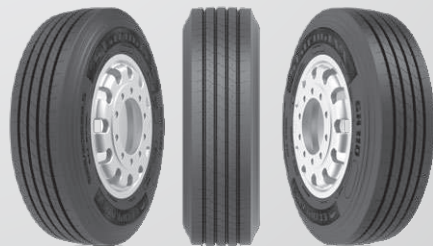
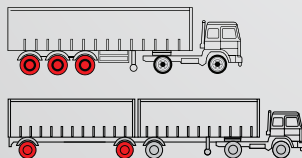


Special tread compound and robust structure enhance efficiency of fuel consumption and improves longevity.



Exceptional carcass structure is suitable for retreading.

POSITION / APPLICATION



LZ300

LZ300 is a free rolling trailer tire. Its special pattern design enables exceptional wet grip. Optimised tread area provides resistance against irregular wear. Strong carcass structure is resistant to cuts and stone retention. Its special compound promises longevity.



TIRE SIZE	LOAD / SPEED INDEX	LOAD CAPACITY		SPEED LIMIT	RIM		INFLATED DIMENSIONS		INFLATED PRESSURE		EU TIRE LABEL			
		SINGLE	DUAL		PERMITTED	RECOM.	SECTION WIDTH	OUTER DIAMETER	psi	Kpa			DB	
435/50R 19.5	160 J	9000	N/A	100	15.00	14.00	443	928.5	131	900	C	A	73	2
385/65R 22.5	160 K (158 L)	9000 (8500)	N/A	110 (120)	12.25	11.75	378	1083	130	900	C	A	69	1
385/55R 22.5	160 K (158 L)	-	-	-	-	-	-	-	-	-	-	-	-	-

UNDER DEVELOPMENT SIZES
385/65R 22.5 164 K

PATTERN PROPERTIES



Optimized tread design provides resistance against irregular wear by balancing the pressure equally under load.



Lateral sipes provide short braking distance.



Circumferential grooves drain water quickly and efficiently.

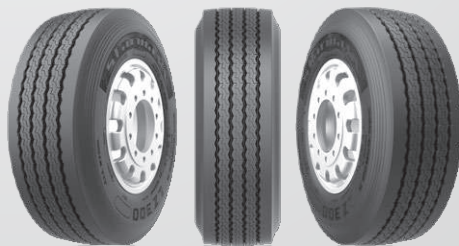
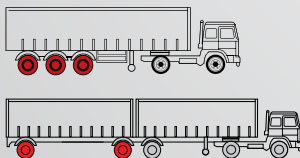


Five circumferential Ribs provide resistance against irregular wear.



High-strength carcass with completely steel frame provides long life and Retreadability.

POSITION / APPLICATION



LZ305



LZ305 is a free rolling trailer tire. Special tread design provides exceptional grip on wet roads and ensures outstanding mileage performance.



TRAILER AXLE

TIRE SIZE	LOAD / SPEED INDEX	LOAD CAPACITY		SPEED LIMIT	RIM		INFLATED DIMENSIONS		INFLATED PRESSURE		EU TIRE LABEL			
		SINGLE	DUAL		PERMITTED	RECOM.	SECTION WIDTH	OUTER DIAMETER	psi	Kpa			DB	
215/75R 17.5	135/133 J	4360	8240	100	6.75	6.00	212	772	123	850	D	B	69	1
235/75R 17.5	143/141 J (144/144 F)	5450 (5600)	10300 (11200)	100 (80)	7.50	6.75	239	800	127	875	C	B	70	1
385/65R 22.5	160 K (158 L)	9000 (8500)	N/A	110 (120)	12.25	11.75	372	1081	130	900	C	B	73	2

PATTERN PROPERTIES



Five circumferential ribs provide resistance against irregular wear.



Lateral sipes ensure short braking distance.



Circumferential grooves drain water quickly and efficiently.

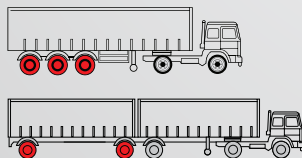


Blocked pattern structure provides superior handling on wet and snowy surfaces.



High-strength carcass with completely steel frame provides long life and retreadability.

POSITION / APPLICATION



GC700



GC700 is an all position pattern for mixed service (On and Off road) use. Strong carcass structure delivers exceptional resistance to cutting and chipping. Wide footprint enhances handling and stability while improving mileage. Suitable for retreading multiple times.



MIXED SERVICE

TIRE SIZE	LOAD / SPEED INDEX	LOAD CAPACITY		SPEED LIMIT	RIM		INFLATED DIMENSIONS		INFLATED PRESSURE		EU TIRE LABEL			
		SINGLE	DUAL		PERMITTED	RECOM.	SECTION WIDTH	OUTER DIAMETER	psi	Kpa			DB	
12R 22.5	152/148 L	7100	12600	120	8.25	9.00	302	1093	123	850	E	B	73	2
315/80R 22.5	156/150 K (154/150 L)	8000 (7500)	13400 (13400)	110 (120)	9.75	9.00	312	1085	123	850	E	B	73	2
13R 22.5	156/150 K	8000	13400	110	9.00	9.75	325	1135	127	875	E	B	73	2

PATTERN PROPERTIES



Special pattern design with blocks of different sizes reduces pattern noise.



Wide and closed shoulder structure increases lateral balance and enhances damage resistance.



Stone ejectors located among blocks minimize pebble penetration inside grooves.



Four circumferential grooves drain water, mud and snow quickly and efficiently, improving handling and increasing service life.



Special tread compound provides resistance to wears, cuts and breaks.



Offers superior handling and braking performance on roads and construction sites with zigzag block structure.

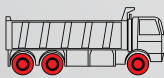


Excellent carcass structure is suitable for retreading multiple times.



Reinforced interconnected blocks provide a balanced and comfortable drive.

POSITION / APPLICATION





GC710

M+S



GC710 is developed to withstand the challenging conditions of construction sites and off-road use, while simultaneously providing perfect highway performance with extended mileage and improved fuel efficiency features.



MIXED SERVICE

TIRE SIZE	LOAD / SPEED INDEX	LOAD CAPACITY		SPEED LIMIT	RIM		INFLATED DIMENSIONS		INFLATED PRESSURE		EU TIRE LABEL			
		SINGLE	DUAL		PERMITTED	RECOM.	SECTION WIDTH	OUTER DIAMETER	psi	Kpa			DB	
315/80R 22.5	156/150 L	8000	13400	120	9.75	9.00	312	1088	123	850	D	B	72	2
12.00R 24	160/157 K	9000	16500	110	9.00	8.50	315.8	1218.8	131	900	D	B	73	2

PATTERN PROPERTIES



Strong circumferential ribs provide maximum resistance against cuts and chips.



Wide channels located on the shoulders improve traction on harsh working conditions including muddy surfaces.



Zigzag block structure ensures perfect grip and safe braking performance.



Stone ejectors located on groove bases avoid pebble penetration and saves the carcass.



Optimized tread profile evenly distributes weight on the footprint to guarantee long service life by avoiding irregular wear.



Special tread compound provides durability for off-road operations and offers comfort and low rolling resistance for highway use.

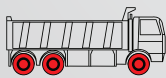


Three channels with wide angles enhance traction on challenging surfaces by effectively discharging water and mud.



Steel belted carcass is strong enough to be retreaded several times to multiply the tire's service life.

POSITION / APPLICATION



GY800



Closed structure and pattern compound are specifically engineered for construction and mining site conditions to offer long life and ultimate wear and cut resistance. Provides excellent grip and handling on tough or muddy surfaces.



MIXED SERVICE

TIRE SIZE	LOAD / SPEED INDEX	LOAD CAPACITY		SPEED LIMIT	RIM		INFLATED DIMENSIONS		INFLATED PRESSURE		EU TIRE LABEL			
		SINGLE	DUAL		PERMITTED	RECOM.	SECTION WIDTH	OUTER DIAMETER	psi	Kpa			DB	
295/80R 22.5	152/148 L	7100	12600	120	8.25	9.00	297	1051	123	850	D	B	72	2
315/80R 22.5	156/150 K	8000	13400	110	9.75	9.00	311	1085	125	850	D	B	72	2
13R 22.5	156/150 K	8000	13400	110	9.00	9.75	323	1135	127	875	D	B	72	2
12.00R 24	160/157 K	9000	16500	110	9.00	8.50	316.3	1219.1	131	900	D	B	72	2

PATTERN PROPERTIES



Optimized tread profile improves resistance against irregular wear by distributing pressure equally under heavy load.



Wide and closed shoulder structure improve lateral balance and damage resistance.



Stone ejectors among the blocks avoid pebble penetration inside grooves.



Three circumferential grooves improve handling and traction by effectively discharging water, mud and snow.



Specially engineered tread compound and wide blocks provide resistance to wears and cuts.



Zigzag block structure offers outstanding handling and braking performance on roads and construction sites.



Strong and durable carcass is suitable for retreading multiple times to maximize service life.



Interconnected blocks provide a balanced drive on road, while increasing durability on site conditions.

POSITION / APPLICATION



DC700 Plus



DC700 Plus is a drive axle tire suitable for mixed service. It is developed to provide high mileage, damage resistance and maximum traction on asphalt and on construction sites. It has a 3PMSF and M+S which means it is approved to use on snowy roads.



TIRE SIZE	LOAD / SPEED INDEX	LOAD CAPACITY		SPEED LIMIT	RIM		INFLATED DIMENSIONS		INFLATED PRESSURE		EU TIRE LABEL			
		SINGLE	DUAL		PERMITTED	RECOM.	SECTION WIDTH	OUTER DIAMETER	psi	Kpa			DB	
295/80R 22.5	152/148 M	7100	12600	130	8.25	9.00	298	1048	123	850	E	B	74	2
315/80R 22.5	156/150 K (154/150 L)	8000 (7500)	13400 (13400)	110 (120)	9.75	9.00	312	1085	123	850	E	B	74	2
12R 22.5	152/148 L	-	-	-	-	-	-	-	-	-	-	-	-	-

PATTERN PROPERTIES



Stone ejectors located deep of grooves decrease stone trapping.



The sipes between circumferential blocks increase traction on snowy and muddy roads, and provide short braking distance



While reinforced interconnected blocks provide a comfortable drive on motorway it also increases block durability in construction site conditions.



Block array with different block sizes improves comfort by minimizing noise.

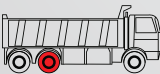


The directional, block-type tread pattern offers excellent grip and traction on wet, muddy and snowy surfaces in construction sites, while performing balanced performance on asphalt.



Optimized groove design enables excellent water/mud/snow discharge.

POSITION / APPLICATION



LCW710



LCW710 is a free rolling trailer tire suitable for mixed service (On and Off road) applications. Special compound enhances longevity by providing exceptional resistance against wear and tears.



TIRE SIZE	LOAD / SPEED INDEX	LOAD CAPACITY		SPEED LIMIT	RIM		INFLATED DIMENSIONS		INFLATED PRESSURE		EU TIRE LABEL			
		SINGLE	DUAL		PERMITTED	RECOM.	SECTION WIDTH	OUTER DIAMETER	psi	Kpa			DB	
385/65R 22.5	160 K (158 L)	9000 (8500)	N/A	110 (120)	12.25	11.75	377	1077	130	900	D	B	74	2

PATTERN PROPERTIES



Optimized tread pattern consisting of wide channels and big blocks provides superior handling and longevity on wet on muddy surfaces.



Unique tread design improves resistance against irregular wear by distributing pressure equally under load.



Reinforced interconnected blocks provide a balanced and comfortable drive while enhancing resistance towards tough site conditions.



Special tread compound provides resistance to wears, cuts and breaks.



Optimized grooves drain water, mud and snow quickly and effectively.



Strong carcass structure is suitable for retreading multiple times.

POSITION / APPLICATION



DM905



DM905 is an all position pattern that is suitable for off operating service. Robust tread blocks provide exceptional resistance to tears and offer outstanding traction in tough road conditions. Offers excellent self cleaning feature thanks to its special lug design.



P.O.R.



TIRE SIZE	LOAD / SPEED INDEX	LOAD CAPACITY		SPEED LIMIT	RIM		INFLATED DIMENSIONS				PR EQUIVALENT	CONSTRUCTION	INFLATED PRESSURE	
		SINGLE	DUAL		PERMITTED	RECOM.	SECTION WIDTH	OUTER DIAMETER	DYNAMIC ROLLING CIRCUMFERENCE	STATIC LOADED RADIUS			psi	Kpa
13R 22.5	154/150 K	7500	13400	110	9.00	9.75	320	1135	520.6	3428.2	18	TL	123	850

PATTERN PROPERTIES



Reinforced block arrays provide steady driving performance at off road conditions.



Interconnected reinforced blocks enhance driving balance and offer resistance to chunks.



Open angled grooves drain mud quickly and eject stones effectively.



Provides high mileage along with steady off the road driving through optimized tread profile, full/empty rate and tread depth.



Exclusive compound provides endurance against wear-out, cuts, splits and laceration.



Durable carcass structure allows retreading.

POSITION / APPLICATION



STARMAXX TRUCK & BUS TIRES DESIGNED FOR LONG LIFE AND FUEL EFFICIENCY



GH110



starmaxx.com

starmaxx
TRUCK-BUS TIRES

GU500

GU500 is an all season bus tire that is suitable for all positions. Robust compound provides exceptional service for inner-city narrow streets and curbs with stop-and-go traffic. Delivers exceptional mileage performance. Offers high retreadability feature thanks to its strong carcass structure.



TIRE SIZE	LOAD / SPEED INDEX	LOAD CAPACITY		SPEED LIMIT	RIM		INFLATED DIMENSIONS		INFLATED PRESSURE		EU TIRE LABEL			
		SINGLE	DUAL		PERMITTED	RECOM.	SECTION WIDTH	OUTER DIAMETER	psi	Kpa			DB	
275/70R 22.5	150/145 J (152/148 E)	6700 (7100)	11600 (12600)	100 (75)	7.50	8.25	281.7	967.3	130	900	D	B	73	2
275/70R 22.5	150/148 J	6700	12600	100	7.50	8.25	281.7	967.3	130	900	D	B	73	2

PATTERN PROPERTIES

- Specially developed tread composition and four wide circumferential ribs separated with sipes provide ultimate performance and longevity in inner-city usage.
- Z-shaped channels and thin sipes provide safety and traction on wet surfaces.
- Circumferential grooves drain water quickly and efficiently.
- Optimized tread width and tread depth ensures longevity and resistance to abrasion.
- Different size block array reduces tread noise level.
- Friction indicators located on sidewalls enable controlling the levels of abrasion.
- Reinforced sidewalls provide resistance against the impacts of friction to pavement while approaching bus stops.
- Special tread composition offers high traction and safety under low temperatures.

POSITION / APPLICATION



GUW550

GUW550 is suitable to be used as all position tire on innercity vehicles. Robust compound provides exceptional service for innercity narrow streets and stop-and-go traffic. Offers high retreadability thanks to its strong carcass structure. 3PMSF and M+S markings on the tire ensure better grip and braking on snow. Wide tread design enhances mileage of the tire.



TIRE SIZE	LOAD / SPEED INDEX	LOAD CAPACITY		SPEED LIMIT	RIM		INFLATED DIMENSIONS		INFLATED PRESSURE		EU TIRE LABEL			
		SINGLE	DUAL		PERMITTED	RECOM.	SECTION WIDTH	OUTER DIAMETER	psi	Kpa			DB	
275/70R 22.5	150/145 J (152/148 E)	6700 (7100)	11600 (12600)	100 (75)	7.50	8.25	282.5	968.3	130	900	D	B	73	2

PATTERN PROPERTIES

- Five circumferential ribs provide safety, balanced driving and lateral resistance.
- Z-shaped capillary sipes offer ultimate traction on snowy roads and improves safety by reducing brake distance.
- Ensures effective water, mud and snow discharge thanks to four circumferential grooves.
- Optimized block array reduces tread noise level.
- Specially formulated tread composition and deep blocks provide ultimate performance and longevity by increasing resistance against abrasion caused by frequent stops.
- Friction indicators located on sidewalls enable controlling the levels of abrasion.
- Reinforced sidewalls provide resistance against the impacts of friction to pavement while approaching bus stops.
- Special tread composition offers high traction and safety under low temperatures.
- Optimized tread width and tread depth enhance longevity by improving resistance against abrasion.




POSITION / APPLICATION



DUW550

DUW550 is designed for innercity vehicles especially as drive axle of buses. 3PMSF and M+S markings on the tire prove better grip and braking on snow. Wide tread design enhances mileage performance of the tire.



TIRE SIZE	LOAD / SPEED INDEX (152/148 E)	LOAD CAPACITY		SPEED LIMIT (75)	RIM		INFLATED DIMENSIONS		INFLATED PRESSURE		EU TIRE LABEL			
		SINGLE	DUAL		PERMITTED	RECOM.	SECTION WIDTH	OUTER DIAMETER	psi	Kpa			DB	
275/70R 22.5	150/145 J (152/148 E)	6700 (7100)	11600 (12600)	100 (75)	7.50	8.25	282.5	968.9	130	900	E	B	74	2

PATTERN PROPERTIES



Specially developed tread composition and four wide circumferential ribs separated with sipes provide ultimate performance and longevity in inner-city usage.



Z-shaped channels and thin sipes provide safety and traction on wet surfaces.



Optimized tread width and tread depth enhance longevity by improving resistance against abrasion.



Unique tread composition offers high traction and safety under low temperatures.



Five circumferential ribs provide safety, balanced driving and lateral resistance.



Friction indicators located on sidewalls enable controlling the levels of abrasion.



Reinforced sidewalls provide resistance against the impacts of friction to pavement while approaching bus stops.



Reinforced interconnected blocks offer ultimate inner city performance.

POSITION / APPLICATION

